

Penzance Sailing Club

Albert Pier

Penzance

TR18 2LL

01736 364989

www.pzsc.org.uk

PASAB

Sailing Instructions

&

Programme 2009



Penzance Sailing Club is affiliated to the Royal Yachting Association



The information on this page does not in any way change the Sailing Instructions.

Reporting

Reporting in within one hour of finishing is **MANDATORY**.

Legs 1 & 2: Communication Officer based in St Mary’s Harbour.

Telephone:

OR

VHF: Callsign “PASAB” on Channel M1

Leg 3: Communication, Officer based at Penzance Sailing Club clubhouse.

Telephone:

OR

VHF: Callsign “PASAB” on Channel M1

Race Committee / Committee Boat

The Race Committee are

.....
...

The committee boat is

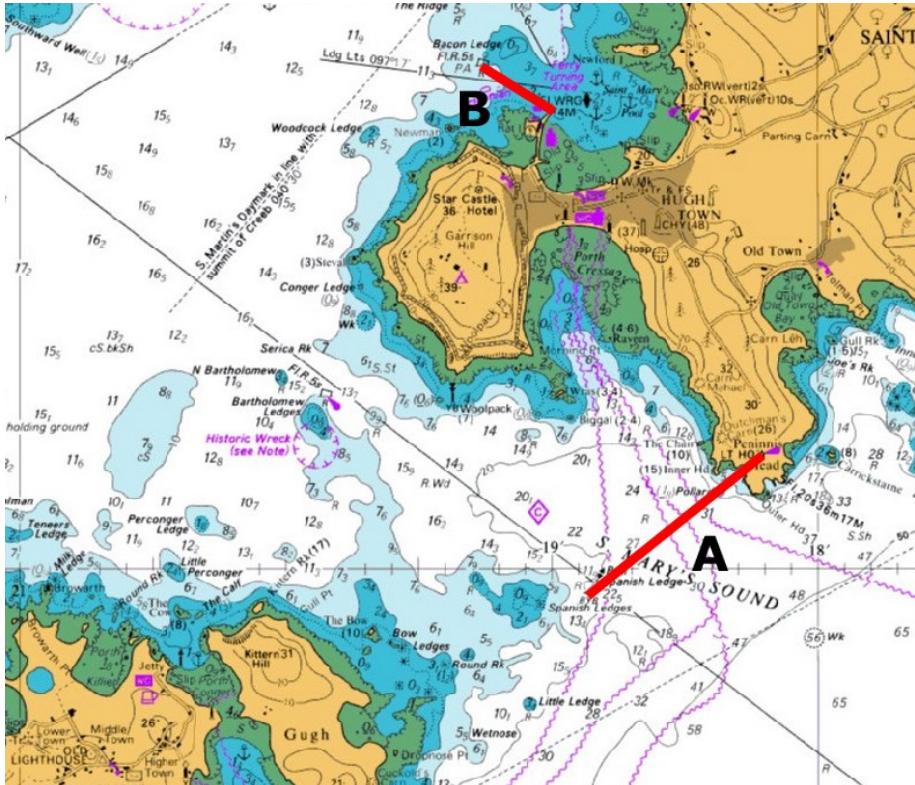
Contacting the Race Committee.....





The information on this page does not in any way change the Sailing Instructions.

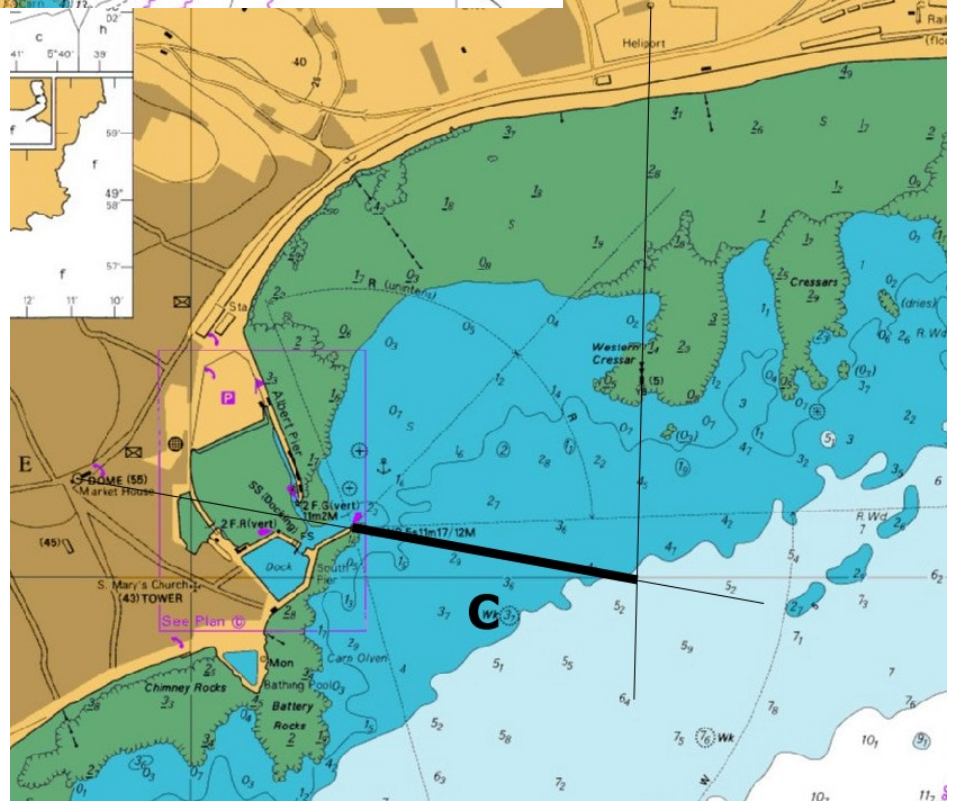
Finishing Lines



The diagrams illustrate the approximate positions of the finish lines:

- A** is the finishing line for **Leg 1 AND** finishing line 'A' for **Leg 2**
- B** is the finishing line 'B' for **Leg 2**
- C** is the finishing line for **Leg 3**

Datum and remarks		
MLWN	MLWS	
2.0	0.8	3.05m below Ordnance Datum (Newlyn)
2.0	0.8	2.99m below Ordnance Datum (Newlyn)
1.9	0.6	2.90m below Ordnance Datum (Newlyn)





PASAB 2009 - SAILING INSTRUCTIONS

1.0 - RULES

1.1 - Racing will be governed by the rules as defined in the current Racing Rules of Sailing.

2.0 – SAFETY & SPECIAL REGULATIONS

2.1 – Each competitor is responsible for deciding whether they put to sea.

2.2 - The Race Committee may reject or cancel the entry of a boat which in its view is un-seaworthy.

2.3 – Boats shall carry equipment consistent with that listed for Category B in the RYA Boat Safety Handbook C8 including a liferaft capable of accommodating their entire crew.

2.4 - Boats shall have third party insurance cover of not less than £2 million.

2.5 – Each boat shall have completed and returned Coastguard Form CG66.

3.0 - REPORTING

3.1 - Each boat shall report its arrival and finish time to the appropriate Communications Officer within one hour of finishing each leg, except that a any boat that finishes between 00:00 and 09:00 hours shall report between 09:00 and 10:00 on the same day. A boat which infringing 3.1 will be disqualified from that leg without a hearing.

3.2 – A boat that does not start a leg of the event shall report this fact to the appropriate Communications Officer no later than the start signal. A boat that retires on any leg of the event shall report this fact to the appropriate Communications Officer no later than 1 hour after their leg time limit.

3.3 – Each boat shall inform the race committee of names and emergency shore contact details for each crew member via the form provided. This shall be done before the start of the pre-race briefing. Any crew changes for Legs 2 and 3 shall be reported to the Communication Officer on the Isles of Scilly before the start of the respective race.

4.0 - COMMUNICATION WITH COMPETITORS

4.1 - A pre-race briefing will take place at the Penzance Sailing Club clubhouse at 18:30 on Friday, 24th July 2009.

4.2 - Any changes to these Sailing Instructions will be announced at the briefing and displayed on the notice board at the front of our clubhouse directly outside the front door.

4.3 – Signals made ashore before the start of Leg 1 will be flown on the PzSC clubhouse flagpole.



4.4 – Before and during the start of Legs 2 & 3 signals may be flown by the committee boat and/or start boat.

4.5 – In the 90 minutes leading up to the start of legs 2 & 3 the race committee may make announcements on VHF Channel M1. These announcements may affect the course to be sailed and / or the starting arrangements. A boat's failure to receive these announcements will not be accepted as a ground for redress. This alters RRS 62.

5.0 – CREW ON BOARD

5.1 – For the purpose of RRS Rule 47, Limitation on Equipment and Crew, each leg of the race will be considered a separate race.

6.0 - HANDICAPPING

6.1 – The Portsmouth Yardstick Scheme as set out in the current YR2 will be used. PY Numbers will be those in the current YR2 adjusted as necessary for variations from Base Rig. Boats without current Portsmouth Numbers will be allocated an estimated Trial Number which may be adjusted during the series.

6.2 - Entrants under IRC shall produce a copy of their current IRC Certificate (endorsed or unendorsed), prior to the deadline for race entries.

7.0 – STARTING SIGNALS FOR ALL LEGS

7.1 – Start Signals will be as follows:

IC flag 'C' + 1 sound signal	Monohull 10 minute warning
IC flag 'P'+ 1 sound signal	Monohull 5 minute preparatory
	Multihull 10 minute warning
IC flag 'C' lowered + 1 sound signal	Monohull start
IC flag 'P' lowered + 1 sound signal	Multihull 5 minute preparatory
	Multihull start

This alters RRS 26

7.2 – In the absence of a mark of the course or a finish line mark, competitors shall use the corresponding mark's charted position.

8.0 – PENALTIES

8.1 - Premature Starters – All Legs

A boat which crosses the start line in the direction of the course after its preparatory signal and before its start will be awarded a 15 minute corrected time penalty. This alters RRS 29. The Race Committee will be the sole arbiter of this rule. No protest will be considered for infringement of 7.1. This alters RRS 60.1.

8.2 - Infringements of Rules of Part 2



A boat which acknowledges infringing a rule of Part 2 of the RRS shall be penalized by the addition of 10 minutes to her corrected time for the appropriate leg for each infringement. This alters RRS 44.

9.0 – Leg 1 (Penzance – St Mary's)

9.1 – Start Times:

Friday, 24th July 2009:

Monohulls – 20:00

Multihulls – 20:05

9.2 – Start line will be between two orange cylindrical buoys approximately east of Penzance Lighthouse Pier.

9.3 – Course:

The course to be sailed will be signalled by the start boat displaying the corresponding Numeral Pennant (eg. 'Numeral Pennant 2' signals 'Course 2').

Leg 1 - Course 1

Proceed to Lowlee east cardinal buoy to port.

Mountamopus south cardinal buoy to starboard.

Wolf Rock Lighthouse to starboard.

St Mary's, Isles of Scilly via St Mary's Sound leaving St Mary's to starboard at all times.

Leg 1 – Course 2

Proceed to Lowlee east cardinal buoy to starboard.

Wolf Rock Lighthouse to starboard.

St Mary's, Isles of Scilly via St Mary's Sound leaving St Mary's to starboard at all times.

9.4 – Finish Line will be defined as a line from Penninis Light such that the light bears 051^oT, with Spanish Ledges east cardinal buoy as a western limit. This line shall be passed in a northerly direction. Both the shoreline and Spanish Ledges have outlying reefs; competitors are advised to familiarise themselves with the extent of these reefs on the appropriate chart.

10.0 - LEG 2 (Around the Islands)

10.1 – Start Times:

Sunday, 26th July 2009

Monohulls - 09:00

Multihulls - 09:05

10.2- Start Line will be between St Mary's pier head and a start boat.

10.3 – Courses:

The course to be sailed will be signalled by the Start boat displaying the corresponding Numeral Pennant (eg. 'Numeral Pennant 2' signals 'Course 2').



Finish Line A

As Leg 1 finishing line – see 9.4

Finish Line B

Between St Mary's pier head and Bacon Ledge red can buoy. Bacon Ledge has an outlying reef; competitors are advised to familiarise themselves with the extent of this reef on the appropriate chart.

Leg 2 – Course 1 (Around all Islands, starboard hand)

Proceed via St Mary's Sound.

Leave St Mary's to port and Spanish Ledges east cardinal buoy to starboard

Then around the Isles of Scilly leaving all rocks and islands charted as dry at MLWS, to starboard.

Finish Line A

Leg 2 – Course 2 (Around all Islands, port hand)

Proceed via St Mary's Sound.

Leave St Mary's to port and Spanish Ledge east cardinal buoy to starboard.

Then around the Isles of Scilly leaving all rocks and islands charted as dry at MLWS, to port.

Finish Line A

Leg 2 – Course 3 (Southern Islands, starboard hand)

Proceed from the start line via St Mary's Sound.

Leave St Mary's to port and Spanish Ledges east cardinal buoy to starboard.

Then around the Isles of Scilly leaving all rocks and islands charted as dry at MLWS to starboard until Steeple Rock west cardinal buoy.

Steeple Rock west cardinal buoy to starboard.

Spencer's Ledge south cardinal buoy to port.

Finish Line B

Leg 2 – Course 4 (Southern Islands, port hand)

Proceed via The Road.

Spencer's Ledge south cardinal buoy to starboard.

Steeple Rock west cardinal buoy to port.

Then around the Isles of Scilly leaving all rocks and islands charted as dry at MLWS to port.

Finish Line A

Leg 2 – Course 5 (Northern Islands, starboard hand)

Proceed via The Road.

Spencer's Ledge south cardinal buoy to starboard.

Steeple Rock west cardinal buoy to starboard.

Then around the Isles of Scilly leaving all rocks and islands charted as dry at MLWS to starboard.

Finish Line A

Leg 2 – Course 6 (Northern Islands, port hand)

Proceed via St Mary's Sound.

Leave St Mary's to port and Spanish Ledge east cardinal buoy to starboard .



Then around the Isles of Scilly leaving all rocks and islands charted as dry at MLWS to port until Steeple Rock west cardinal buoy.
Steeple Rock west cardinal buoy to port.
Spencer's Ledge south cardinal buoy to port.
Finish Line B

Leg 2 – Course 7 (St Mary's, starboard hand)

Proceed via Crow Sound.

Leave St Mary's and all the drying rocks of St Mary's to starboard including the Gill Stone but excluding Crow Rock and Crow Bar.

Finish Line A

Leg 2 – Course 8 (St Mary's, port hand)

Proceed via St Marys Sound.

Leave St Mary's and all the drying rocks of St Mary's to port including the Gill Stone but excluding Crow Rock and Crow Bar.

Finish Line B

11.0 - LEG 3 (St Mary's - Penzance)

11.1 – Start Times:

Monday, 27th July 2009

Monohulls - 09:00

Multihulls - 09:05

11.2 – Start Line will be between St Mary's pier head and a start boat.

11.3 – Course:

Proceed via St Mary's Sound.

Leave St Mary's to port and Spanish Ledge east cardinal buoy to starboard.

Wolf Rock Lighthouse to port.

11.4 – Finish line will be formed by a transit extending from Penzance Market House Dome (conspic) through Penzance Lighthouse as far as a transit of Penzance heliport radio mast and Western Cressar south cardinal beacon (a distance of 650 metres from Penzance Lighthouse).

12.0 – TIME SLIPS & DECLARATIONS

12.1 – Time slips and declarations for all legs shall be posted in the PzSC clubhouse post box by 21:00 Tuesday 28th July 2009. Incorrectly completed timesheets will be recorded as DNC.

13.0 – PROTESTS

13.1 - Protests for each leg shall be submitted to a member of the Race Committee by the following times:

Leg 1 – 18:00, Saturday 25th July 2009

Leg 2 - 19:00, Sunday 26th July 2009

Leg 3 – 11:00, Tuesday 28th July 2009





14.0 - TIME LIMITS

14.1 - Times Limits for each leg will be as follows (PY handicap corrected time):

Leg 1 - 18 hours

Leg 2 - 8 hours

Leg 3 - 18 hours

Note: *Individual Time Limit = $\frac{\text{Leg Time Limit} \times \text{Allocated PY}}{1000}$*

14.2 - A boat that fails to finish before the Time Limit or that can demonstrate it was unable to finish before the time limit, provided that it has not retired prior to that time, will not be excluded from the overall positions. Such boats will be allocated a corrected time (based on PY) as follows:

Leg 1 – 20 hours

Leg 2 – 10 hours

Leg 3 – 20 hours

14.3 – A boat can demonstrate that it was unable to finish as follows: By recording its position at a set time and demonstrating that travelling the straight line route along the race course from that position at a speed of 10 knots it would be unable to finish in the time remaining until her time limit.

15.0 - SCORING

15.1 – Overall results will be based on an aggregated corrected time over all legs.

15.2 - Any boat disqualified from or failing to finish any one leg, except as allowed in 14.2, is automatically eliminated from the overall race. However, a boat may still qualify for those individual legs from which it was not disqualified.

16.0 - LIABILITY

The race organisers shall not be liable for any loss, damage, death or personal injury howsoever caused to the owner/competitor, his skipper or crew, as a result of their taking part in the race or races. Moreover, every competitor warrants the suitability of his boat for the race or races. The safety of a boat and its entire management, including insurance, shall be the sole responsibility of the owner/competitor who must ensure that the boat is fully found, thoroughly seaworthy, and manned by a crew sufficient in number and experience, and who are physically fit to face bad weather. The owner/competitor must be satisfied as to the soundness of the hull, spars, rigging, sails and all gear. He / She must ensure that all safety equipment is properly maintained, stowed and in date and that the crew know where it is kept and how it is to be used.



ALLOCATION OF TROPHIES AND PRIZES

OVERALL TROPHIES

- **Manzi Trophy** - Fastest time overall (PY)
- **Row Trophy** - Fastest Penzance-based monohull (PY)
- **Cobbler's Last** - Last Penzance-based monohull overall (PY)
- **Christopher Loughton** – Fastest multihull time overall (MOCRA)
- **COGS Trophy** - Fastest Overall COGS entrants (COGS handicap)
- **IRC Trophy** - Fastest Time Overall (IRC)
- **Petit Bateau Trophy** – Fastest overall double-handed (elapsed time)

SPECIAL TROPHIES

- **Colin Harrison Cup** – Youngest individual to compete in each race
- **Lanxon Trophy** - Merit and Overall Effort

CLASS TROPHIES

- **Penzance Sailing Club Shield** - Fastest Class 1 monohull (PY)
- **Laity (Morrab Studio) Trophy** - Fastest Class 2 monohull (PY)
- **Robinson Travel Trophy** - Fastest Class 3 monohull (PY)

LEG TROPHIES

Races also open to Non-PASAB Entrants:

- **Porthcressa Trophy** - Fastest Leg 1 monohull (PY)
- **Penwith Trophy** - Fastest Leg 1 multihull (PY)
- **Venus Trophy** - Fastest Leg 2 multihull or monohull (PY)
- **Rainbow Trophy** - Fastest Penzance-based Leg 2 monohull (PY)
- **Bevill's PASAB Cup** - Fastest Leg 3 monohull (PY)
- **Tolvadden Trophy** - Fastest Leg 3 multihull (MOCRA)

PzSC reserves the right to retain trophies at Penzance Sailing Club



GENERAL INFORMATION

Penzance Harbour

Outer harbour dries out.

Waiting moorings available south of the lighthouse pier.

The dock gate is open from HW-2 to HW+1.

Call 'Penzance Harbour' on VHF channel 12 or phone 01736 366113.

Newlyn Harbour

Newlyn caters mainly for fishing boats but may offer limited deep-water facilities.

The harbour is accessible at all states of tide.

St. Mary's Harbour

Call 'St. Mary's Harbour' on VHF channel 14 or phone 01720 422768

Visitors' moorings are yellow.

Boats can take the ground alongside at the south end of the main pier.

Showers are available on the quay.

HM Coastguard: 01326 317575

St Mary's

Pubs & Restaurants

There are three main pubs which all serve food on the main street in Hugh Town: The Mermaid, Atlantic Inn and The Bishop and Wolf. There are also a number of restaurants mainly on the main street.

Money

There is a cashpoint outside the Lloyds TSB branch on the main street approximately 400m from the pier on the right.

Provisions

The main shop on St Mary's is the Co-op on the main street approximately 400m from the pier on the left.



PERSONAL INFORMATION

Boat Name: _____

Sail Number: _____

Time Limits (for programmed start times only)

Leg 1 _____ Leg 2 _____ Leg 3 _____

PROGRAMME – PASAB 2009

Friday 24th July

18:30 - Briefing at PzSC Clubhouse

Start of Leg 1 (Penance - St Mary's)

20:00 – Monohulls, 20:05 – Multihulls,

Sunday 26th July

Start of Leg 2 (Around the Islands)

09:00 – Monohulls, 09:05 – Multihulls,

21:00 - Reception and prizegiving for Leg 2 in the **Scillonian Club**.

Monday 27th July

Start of Leg 3 (St Mary's - Penzance)

09:00 – Monohulls, 09:05 – Multihulls,

Tuesday 28th July

11:00 – Protest Deadline for forms to be deposited in the PzSC letterbox

21:00 - Deadline for overall time slips to be deposited in the PzSC letterbox

Saturday 1st August

20:00 - Prizegiving at PzSC Clubhouse